



MATRIX TOOL PARTS BUSINESS



ISO 9001

<KOREA>

MATRIX KOREA CO.KR can supply all kinds of Devices needed in Semiconductor Packing (or Assembly) Procedure with the high quality and the best service at reasonable price.

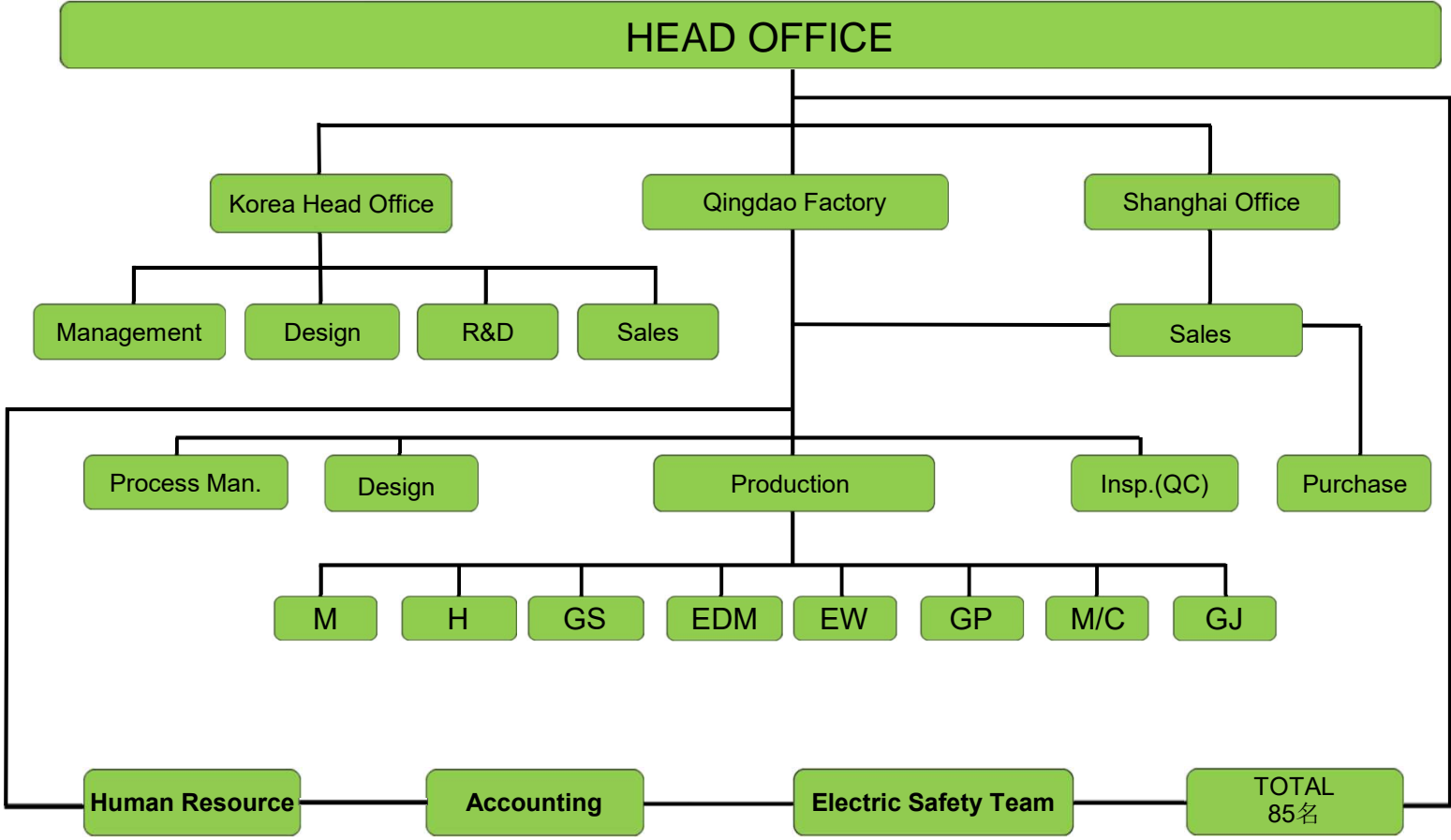
Our Key Words are :



- WAFER PARTS
- DIE ATTACH PARTS
- BONDING PARTS
- MOLD DIE SET & SPARE PARTS
- TRIM FORM DIE SET & SPARE PARTS
- TEST HANDLER PARTS
- CONNECTOR & CORE PARTS
- The Other PARTS (CERAMIC, MAGAZINE..)



Company Organization



Application Awards



**Texas Instruments (Phils.)
1997 Best Supplier**



**Texas Instruments (Phils.)
1998 Best Supplier**



**Texas Instruments (Phils.)
1999 Best Supplier**



**Texas Instruments (Phils.)
2000 Best Supplier**



MICRO in JAPAN



**Intel (Phils.)
1999 Best Supplier**



Tool Table for Equipment

No	MACHINE	SIZE	UNIT	Q'TY	MAKER	ORIGIN	REMARKS
1	CNC PROFILE PROJECT GRINDING MACHINE	130X80X70	SET	5	WASINO	JAPAN	80PL:1SET 5T : 1SET 580H:1SET 680H:1SET 135AS:1SET
2	CNC FORMING GRINDING MACHINE	120X150	SET	1	WASINO	JAPAN	WING:ACE2
3	CNC WIRE CUTTING M/C	600X400	SET	4	SODIC	JAPAN	AP200L/AP360L/ AG400
		400X270	SET	1	SODIC	JAPAN	AP250Ls
4	CNC EDM MACHINE	400X600	SET	1	CHARMILLE	SWITZERLAND	In KOREA
		400X600	SET	2	CHMER	TAIWAN	
		360x600	SET	1	SODICK	JAPAN	AQ360L
		360x600	SET	3	SODICK	JAPAN	AD30LS
5	EDM MACHINE	500X400	SET	6	CHARMILLE	SWIZERLAND	S(4)/C(2)
6	CNC VERTICAL MACHINING CENTER	450X600	SET	2	PADAL/HYUNDAI	USA/KOREA	
		420X350	SET	1	SODICK	JAPAN	MC430L
		400X550	SET	1	SODICK	JAPAN	S50L
		600X800	SET	1	HAAS	USA	VF3
7	NC GRINDING MACHINE	600X400	SET	1	AMADA	JAPAN	
8	GRINDING MACHINE	170X350	SET	30	CHANG-HAN	JAPAN/KOREA	
9	JIG GRINDING MACHINE	600X380	SET	1	HAUSER	SWITZERLAND	
10	MILLING MACHINE	600X400	SET	9	HWACHON	KOREA	
11	LATHE	400X1060	SET	1	TONG-IL	KOREA	
12	SUPER DRILL MACHINE	0.08 ~ 3.0	SET	1	KEUM-MA	CHINA	DD-703X
13	MOLD PRESS FOR TEST		SET	1	FUJIWA	JAPAN	200TON
14	H/TREAT.EQUIP.SUB ZERO.SAND BLAST		SET	5	SAMWON	KOREA	



Precision Machine Tools Image



JIG GRINDING MACHINE

Precision: ± 0.002
Major fabricating for precision hole



CNC WIRE CUTTING M/C

Precision: ± 0.002
Major fabricating for precision hole



CNC EDM MACHINE

Precision: ± 0.005
Major fabricating cavity bar EDM surface



CNC VERTICAL MACHINING CENTER

Precision: ± 0.005
Major fabricating for cavity 电极



CNC MACHINING CENTER

Precision: ± 0.01
Major fabricating cavity bar



CNC PROFILE PROJECT GRINDING MACHINE

Precision: $\pm 0.0001 \sim \pm 0.02$
Major fabricating punch/die pitch



Tool Table for Inspection

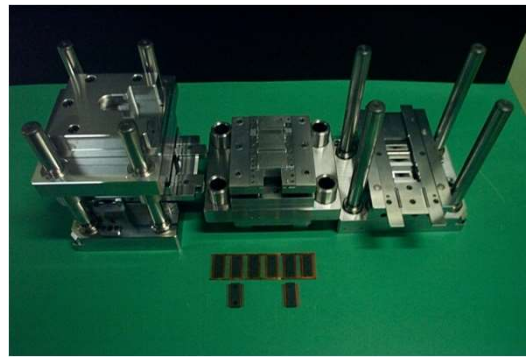
No	MACHINE	SIZE	UNIT	Q'TY	MAKER	ORIGIN	REMARKS
1	CNC MULTI-SENSOR MEASURING SYS	305X200X150	SET	1	MAHR	GERMANY	MS250
				1	TESA	SWITZERLAND	VISIO 300
2	3D -MEASURING SYSTEM	650X650X500	SET	1	HEXAGON	SWITZERLAND	Optive Advance 332
3	3X-REFLEX 775 BASE MEASURING SYS	700X700X500	SET	1	BROWN	USA	
4	MICROSCOPE MF-A3017B	0~300	SET	1	MITUTOYO	JAPAN	MF-A3017B
5	PROFILE PROJECTER	0~200	SET	1	NIKON	JAPAN	V20B
6	CNC MICRO-HEIGHT GAUGE	0~600	PC	1	TESA	SWITZERLAND	ACCURACY 1 μ
7	CNC 2X-MEASURING	0~500	PC	1	TRIMOS	SWITZERLAND	ACCURACY 1 μ
8	PROFILE PROJECTOR	0~600	SET	1	STARRETT	USA	ACCURACY 2 μ
9	GAUGE BLOCK	0.5~100(103PCS)	SET	56	MITUTOYO	JAPAN	ACCURACY 0.2 μ
10	ROCKWELL HARDNESS	150KG	PC	2	DAE YOUNG	KOREA	
11	HEIGHT GAUGE	0.01~300	PC	5	MITUTOYO	JAPAN	
12	DIGIMATIC INDICATOR	0~50(0.001)	SET	1	MITUTOYO	JAPAN	ACCURACY 1 μ
13	PIN GAUGE	ϕ 0.5~5	PC	2	MITUTOYO	JAPAN	
14	STONE PLATE FOR INSPECTION	450X300X95	PC	53	JUNG WON	KOREA	
		1500X1000X250		2			
15	ELECTRONIC DIGITAL MICROMETER	0~25(0.001)	PC	45	MITUTOYO	JAPAN	
		25~50(0.001)		12			
16	ELECTRONIC DIGITAL CALIPER	0~150(0.01)	PC	45	MITUTOYO	JAPAN	
		0~200(0.01)		4			
		0~300(0.05)		4			
17	INDICATOR	0~0.3(0.001)	PC	53	TESA	SWITZERLAND	
		0~0.2(0.002)		20			
		0~0.8(0.01)		5			
18	SCOPE	60	SET	1	OLYMPUS	JAPAN	
		40		2	DONG WON	KOREA	
19	SURFACE TESTER		SET	1	MITUTOYO	JAPAN	



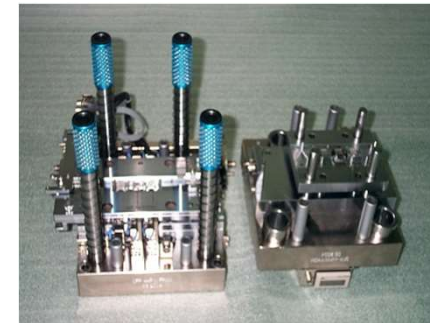
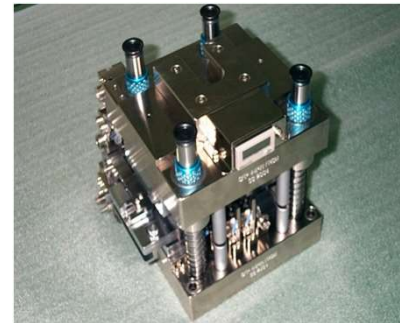
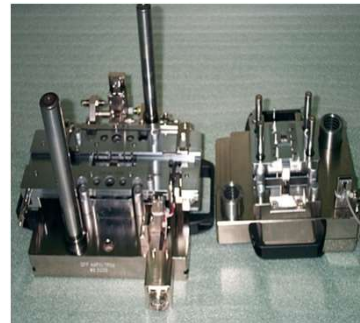
Parts for Semiconductor

Trim & Form Module Set

PDIP Trim Module



QFP Trim & Form Module

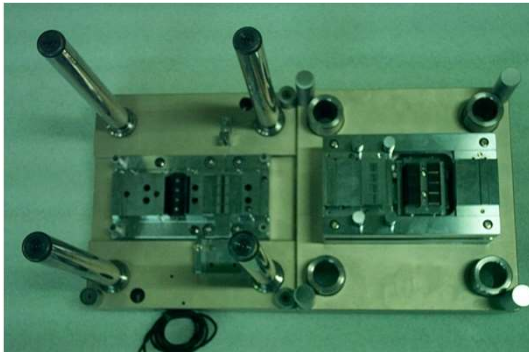
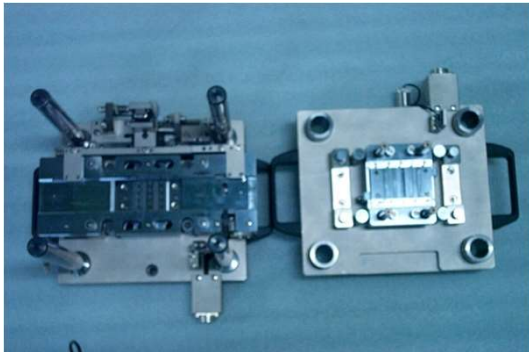
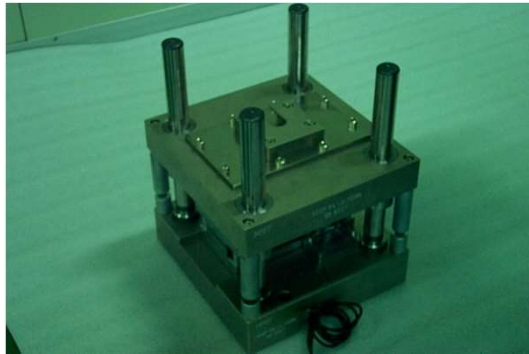
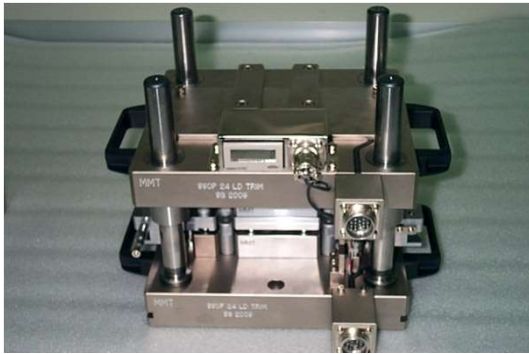




Parts for Semiconductor

Trim & Form Module Set

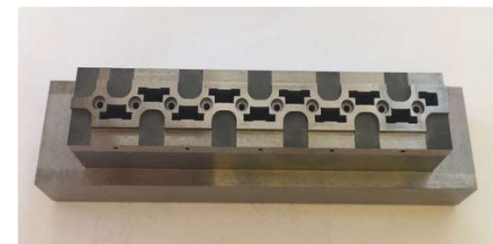
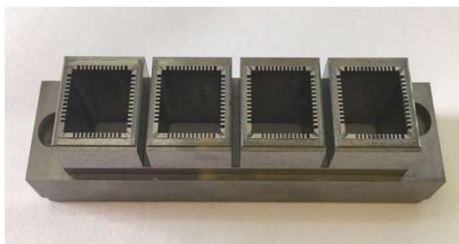
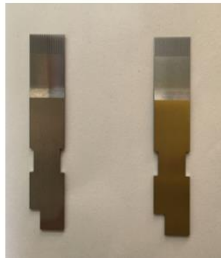
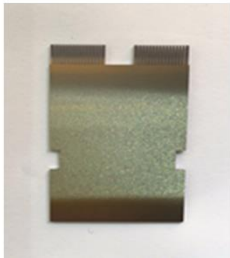
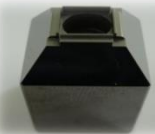
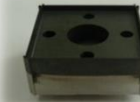
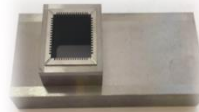
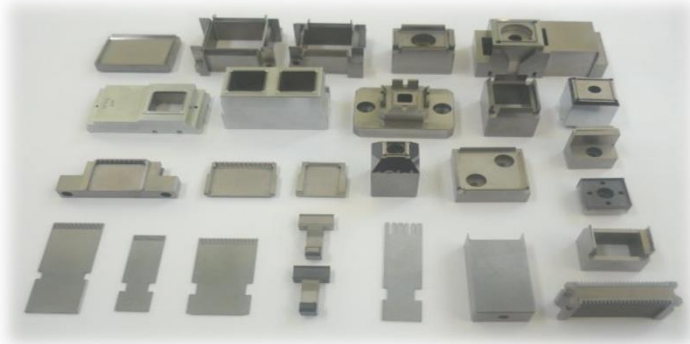
SSOP Trim & Form & L/L Cut Module





Parts for Semiconductor

Trim & Form Spare Parts



THANK YOU FOR YOUR INTEREST!

Matrix Semiconductor Snd. Bhd. (1371797-M)

Lot 1.02, Level 1, Glo Dmansara, 699, Jalan Damansara,
Taman Tun Dr Ismali, 60000 Kuala Kumpur

Phone: +6 03-2935-8180 Cell: +6 011-2730-2370

Email : siva@matrixsem.co / hazman@matrixsem.co

Matrix Seminconductor Korea.

Annamro-369beon-gil, 30, Bupyeong-gu, Incheon.

Phone: +82 10-6303-9620

Email : kiyoung@matrixsem.co

